

Point Reyes Farmstead Cheese Company

**P O I N T
R E Y E S**
FARMSTEAD CHEESE CO





Environmental Best practices

Carbon Farm Plan/ Nutrient Management

Water Reclamation

Renewable energy/ reusable energy in feed

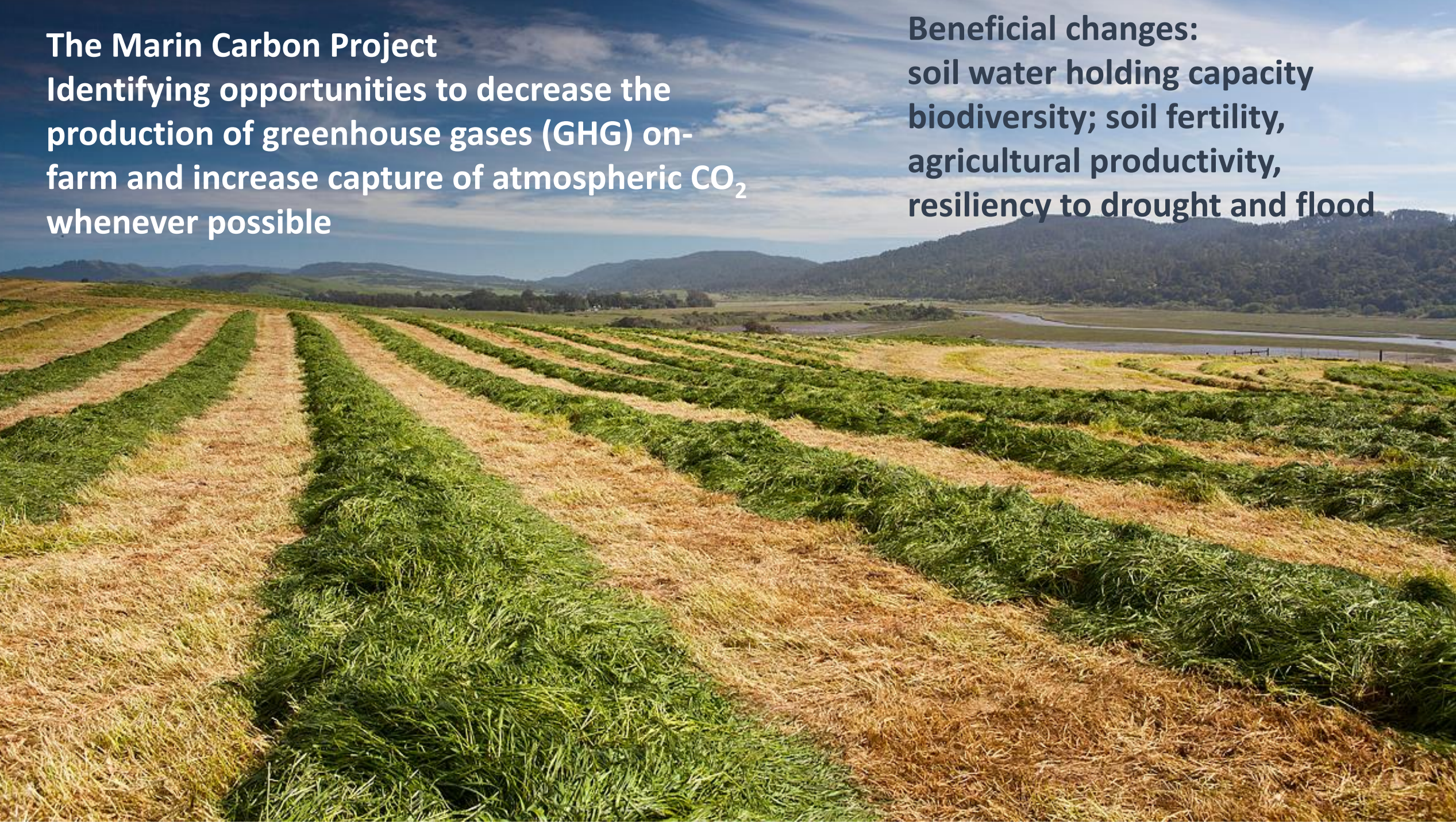
Carbon Farm Plan
***With out creating
healthy soil and
healthy animals we are
not doing our job as
stewards of the land***



The Marin Carbon Project

Identifying opportunities to decrease the production of greenhouse gases (GHG) on-farm and increase capture of atmospheric CO₂ whenever possible

**Beneficial changes:
soil water holding capacity
biodiversity; soil fertility,
agricultural productivity,
resiliency to drought and flood**





WATER REUSE

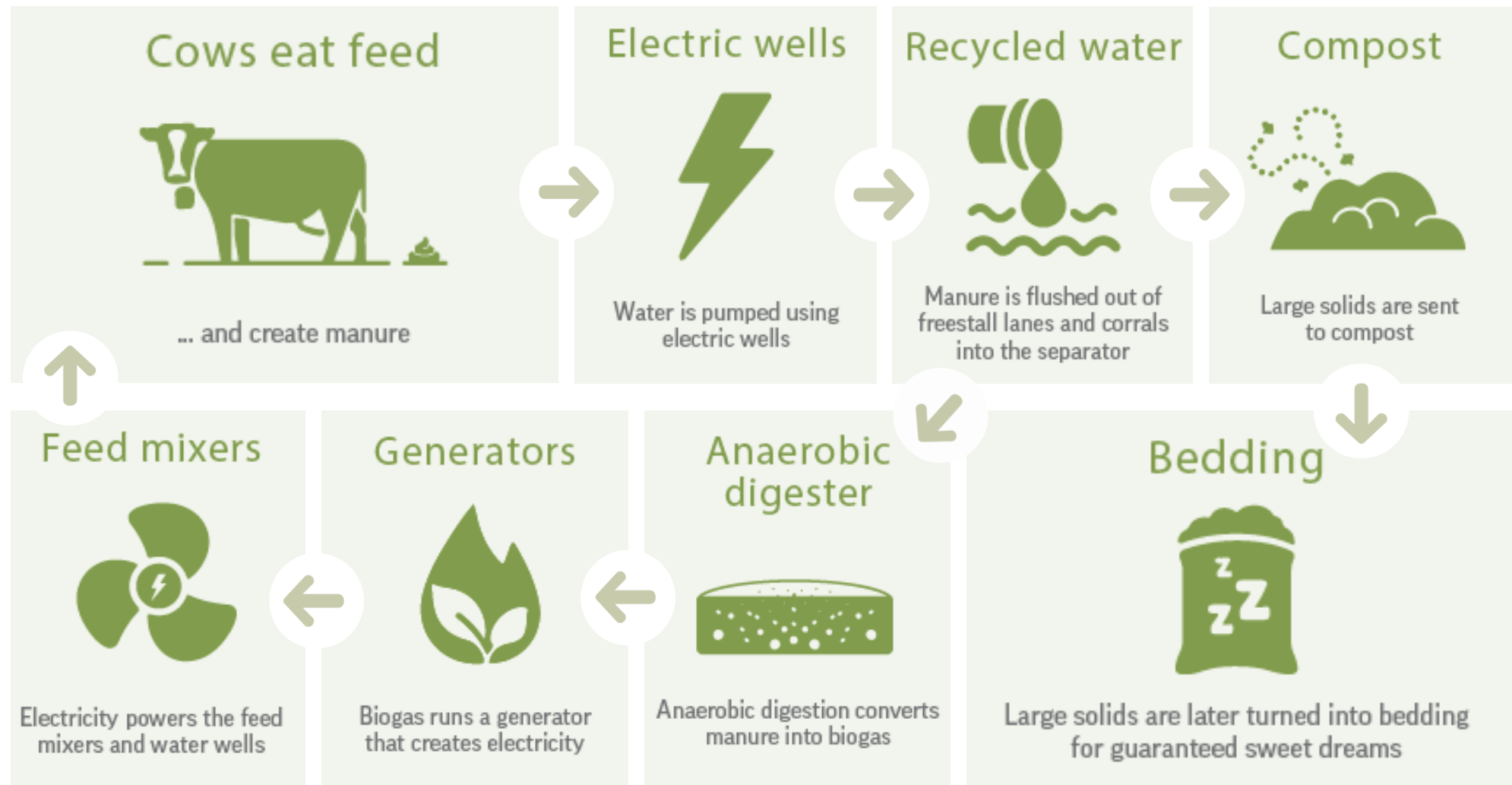
Recycling water

5000/gal a day for
sanitation

CIP Recovery systems

METHANE DIGESTER







Nutritional Impact

- ***cotton seed – Rich in Omega 3”s***
- ***canola pellets – protein***
- ***soy hull pellets – carbohydrates***
- ***rolled corn – carbohydrates***
- ***brewer’s grain – protein & carbohydrates***
- ***Whey from the cheese plant - protein***
- ***Almond Hulls- Fiber***

California Dairy Cows

TURNING FOOD WASTE INTO NUTRITION

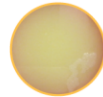
California's 1.7 million dairy cows consume on average **10,275 tons per day** of by-products from other food industries that may otherwise go to landfill.

TOP 5 BY-PRODUCTS IN DAIRY COW FEED



ALMOND HULLS

(hulling process for almonds)
4,925 tons



LIQUID MILK WHEY

(expelled during cheese-making)
2,750 tons



GRAPE POMACE

(crushed grapes after juicing)
1,350 tons



MILLRUN

(peeling skin off wheat to make flour)
750 tons



RICE BRAN

(processing rice paddy into rice)
500 tons

Cows are able to digest a diverse number of feed by-products that would end up in public landfills and are then able to create one of the most nutritious foods — milk.



¹ California Department of Food and Agriculture: California Dairy Statistics Annual, 2017, https://www.cdffa.ca.gov/dairy/pdf/Annual/2017/2017_Statistics_Annual.pdf

² Dairy Moos, "The Complex Science Behind Feeding Cows", 2011, <http://www.dairymoos.com/the-science-behind-feeding-cows/>

Photo Credits: User:Palagiri Rama Krishna Reddy/ Wikimedia Commons/CC-BY-SA-3.0
User:Cecilia/ Wikimedia Commons / CC-BY-SA-2.0

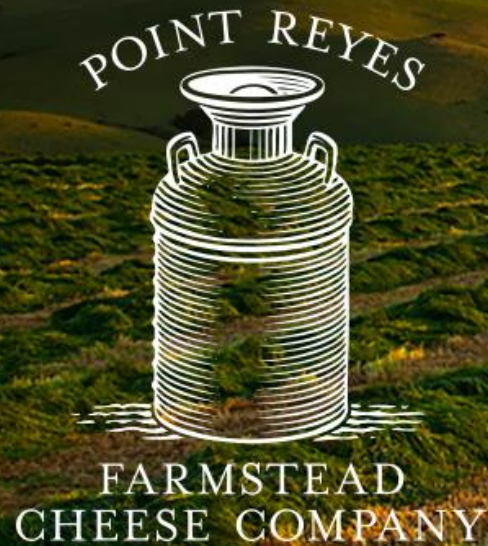


meet the CHEESES

Agritourism – Social impact



Come & Visit



PointReyesCheese.com